



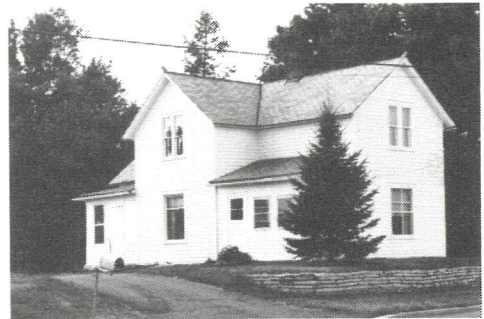
## HISTORIC SITES SURVEY UNDERWAY

The Plymouth Historical Society is in the process of trying to survey (locate) all the the buildings in Plymouth erected before 1920. The Society felt a need to document part of its history in this manner, especially in light of the fact that Plymouth is growing so quickly, and many of the old structures are meeting the bulldozer without any one knowing anything about their history.

Starting last fall, Board members Alice Mellen and Bea Jordan were able to visually identify in excess of older 150 buildings (all but a few were homes) just by driving every street in the City. Photographs were taken of all, and in many cases the homeowners were interviewed to gain some background on the building. To help verify the age of these structures, the City Assessor's Office have assisted by allowing the Board members access to their records to help determine an exact date of construction. Board member Ginny Ohman has also assisted with the second phase of the project and with typing the survey sheets that will be used as permanent records.

The process will continue again this spring as more old buildings are discovered and homeowners contacted. The Society has done all it can on its own and now needs the public's help in this search. In May, a letter will be sent asking owners of homes built before 1920 and family members of the original owners of these homes to bring old photos, property abstracts, and other documents concerning these buildings to the Old Town Hall Museum. Old Photos can be copied (and/or donated), abstracts "translated", oral histories taken and questions answered about the project or the Society in general.

By the April Open House, the "Historical Sites Survey" will be on display, although some of the survey sheets may still be in the "rough draft" stage.



"Eckes" House  
3200 Fernbrook Lane  
Built 1907

### **PERSONAL ITEMS FROM THE SOCIETY:**

Sympathy was entended to the family of Maxine Haarstick (former Board member) on her recent death.

Sympathy also to Florence Kardong on the death of her husband, Joe. They were among the founders of the Society in 1975.

Congratulations to PHS President Steve Zinnel on his recent promotion to President of Norwest Bank, Stillwater. He has had to resign from the Society and we will miss his active leadership very much.

At the February board meeting, it was agreed that the Society secretary would send an appropriate card upon hearing of an illness, death or 50th anniversary of any past or present board member; please contact Virginia Ohman (559-2456) with any information.

**HELP WANTED: Collections Committee Person**

Duties: Supervise receiving donations, making catalog cards and forms, marking donations according to approved methods.

Qualifications: Willingness to learn accessions procedures (all written down), good organizational skills; librarian or similar experience helpful but not necessary.

Contact: Edith Hopperstad, Chairperson at 473-3427.

Edith has been busy at home all winter trying to sort through and identify photos and newspaper clippings collected over the years. She still has much work to do on this and also the Accessions Committee has many donations to catalog and mark. Once this work is caught up, Edith would like to "retire" but needs someone to take over cataloging new donated items. The accessioning process is not difficult and is carefully spelled out in the manual. Please call Edith if you can help out.

The Society prefers to collect those items that are of historic relevance to the Township. Someone wishing to donate some artifacts, must make arrangements ahead to be sure the proper donor forms are filled out.

From Some Observations About Plymouth, Minnesota 1870

by Alice H. Mellen

A land boom in Minnesota in 1856 and 1857 which saw the most rapid growth in the area's history caused a village called Plymouth to be platted on the northwest shore of Parkers Lake in 1857, when a saw mill was brought in. The following spring, before much development could take place, the lake flooded out the mill and the village plan was abandoned as quickly as it sprung up.

By 1860, all but a few sections of the township were claimed.....Approximately eighty families had settled in the village, many having pre-empted their land before the beginning of registration in 1857....These 80 families were made up by 406 residents. Real estate values on the census were \$59,000 and personal property was valued at \$11,250.

By 1870 Plymouth had grown by 176% to 143 families according to the census; (population figures were not tallied for this report). Many names listed on the County Tax and Assessment Rolls were not on the census, so an accurate head count or family count was difficult. The value of personal property had jumped to approximately \$37,500 and real estate to \$172,000. According to the tax rolls, 23,000 acres were used for farming on approximately 190 farms.

By 1930 25,500 acres were under cultivation or used for farming purposes by 451 farm families; land values had risen to \$3.6 million.

The 1870 Tax and Assessment Rolls for Plymouth Township listed the head of household, location of property, acreage and values for real estate and personal property. Some of the more wealthy persons at this time were Francis Berube with \$7,000 in real estate and \$1,000 in personal property; Oliver Huot with \$1,700 in real estate and \$3,000 in personal property; M. Weyandt with \$4,000 in real estate and \$1,000 in personal property. Only Francis Berube held land parcels in excess of the 160 acres that he could have originally homesteaded.

HOW MANY OF YOU HAVE BEEN TO THE PLYMOUTH HISTORICAL SOCIETY MUSEUM?

WHEN YOU WERE THERE, DID YOU NOTICE---

- Bog shoes for horses (Philip Eckes)
- Chicken catcher (Philip Eckes)
- Ice cream scoop from the Farmers' Home Tavern & Store (Schiebe Family)
- Old school books from District 51 - Sandhoff School (Ida Johnson)
- Sofa made by Herman Sandhoff c. 1870 (Ida Johnson)
- Wooden yoke for carrying water buckets, belonged to Thomas Ditter who built the Town Hall (Albert Ditter)
- Coverlet dated 1851 by grandmother of Joyce McCaughey
- Bedsted belonging to Mathias Menglekoch c.1890 (Gladys Menglekoch)
- Leather collar box with celluloid collars - early 1900s (Jan Begin)

These are only a few of the unusual items now on display at the Museum (donors names are listed in parenthesis). Be sure to find these and our new acquisitions when you visit April 24.

RUMMAGE SALE

A fall rummage sale is being planned by the PHS. Watch for further announcements and start collecting. If you have any donations you will not be able to keep until fall, call Myrtle Eckes at 545-6168.

**THANKS**

Many thanks for new blinds (shutters) and for hanging the mirror in the men's room to Mark Eckes and Vern Dotseth, and to Gil Hoppersted for putting in much needed shelving.

Notes from History of Hennepin County and City of Minneapolis 1881

Plymouth - Hotels: "The 'Farmers' Home' Hotel was built by Nicholas Bofferding in 1863, and kept by him for several years. He sold it Carl Schiebe, in the spring of 1872. It is now conducted by Carl Schiebe Jr., and is located at the forks of the Watertown and Wayzata Roads, on the west side of Section 36.

Official Roster - "The present board of officers for the town are: Supervisors, Jacob Roths, Chairman, David Gorham and William Eagan; Town Clerk, J.H. Jordan; Treasurer, Carl Schiebe, Jr.; Assessor, J.M. Parker; Constables, J.W. Day and Timothy Ryan; Justices of the Peace, J.M. Parker and P. J. Winnen.  
Population in 1880, 1,074. Number of Acres in the town, 21,480.  
Valuation of real estate, \$268,343; of personal property, \$37125. Taxes for 1880, \$2667."

IF YOU WOULD LIKE TO BECOME A NEW MEMBER, THIS IS THE TIME!  
IF YOU HAVE NOT RENEWED YOUR ANNUAL HISTORICAL SOCIETY MEMBERSHIP  
IT IS DUE NOW!

As a member of the society you are aiding the financial support necessary to keep up the Society's ongoing programs. These include operation of the museum, processing acquisitions, library materials, oral history programs, slide show presentations, newsletter, historic sites survey.

If you have any questions about membership, call Jack Malmstedt, Membership Chairman, at 437-4493. You may bring the handy membership form with you to the Open House April 24 or mail it to Jack.

-----  
PLYMOUTH HISTORICAL SOCIETY  
MEMBERSHIP ENROLLMENT and MEMBERSHIP RENEWAL

Please enroll me as a member of the Plymouth Historical Society. My check (or cash) in the amount indicated below as dues for the year (or life membership) is enclosed. Annual Dues expire May 1.

\$5.00 Individual Annual Membership  
\$7.50 Family Annual Membership  
\$100.00 Life Membership

Name

Phone

Address

City & Zip

I am interested in helping the Plymouth Historical Society with the following projects:

Please contact me.

Please complete and return this form to  
Jack Malmstedt  
15 Niagara Lane  
Plymouth, MN 55441

If you have any other comments or questions about the Plymouth Historical Society, please write them below and return with your membership form. Thank you.

Plymouth Historical Society

HOME OF THE PLYMOUTH HISTORICAL SOCIETY



TOWN HALL-BUILT 1885

# OPEN HOUSE/ANNUAL MEETING

APRIL 24, 1985 7:00 - 9:30 P.M.

3605 FERNBROOK LANE  
1 BLK. W. OF 494, No. 55

GUEST SPEAKER - **GRACE SWENSON**

LOCAL LIBRARIAN - HISTORIAN

SLIDE PRESENTATION:

## STORY OF THE HINKLEY FIRE

BASED ON HER BOOK, FROM THE ASHES

# MUSEUM OPEN

Everyone Invited

For more information, call 559-2800