



PLYMOUTH HISTORICAL SOCIETY

2015

Winter

The Plymouth Historical Society wishes you a very Happy New Year



Membership Renewal

It's the New Year so remember to renew your 2015 PHS Membership. The renewal form for 2015 is included at the back of this news letter and you might want to think of becoming a Life Time Member. Please help keep your Plymouth Historical Society active. The Plymouth Historical Societies mission is the discovery, preservation and dissemination of historical knowledge about the City of Plymouth, Minnesota.

Old Fashioned Christmas

On Saturday, December 6th the Plymouth Historical Society and the Plymouth Park & Recreation held the 28th Old Fashioned Christmas in Plymouth. It drew record crowds and the highlight was not only Santa Claus but his Reindeer along with Bob Gasch telling stories, crafts, s'mores and hayrides. It is always a great photo opportunity for the families. Here are a few photos of the wonderful day.





Hayride memories that last a life time.

While waiting in line to visit old Saint Nicolas, kids and parents were entertained and educated about what life was like for Olaf Ellefson a new Norwegian immigrant farmer to Plymouth in 1872. Through a strong Norwegian brogue, guests were greeted with a “takk for du kom ” (Thankyou for coming). After establishing that English, not Norwegian, was the language of choice for most Americans in 2014, discussion followed about why and how immigrants came to Plymouth in 1872. Everything was going great till one small boy got excited and started talking to Olaf in his native language, Norwegian. Cover blown, it was necessary to explain what a living history act was all about. To all a “God yol” and “Godt Nyttar”.

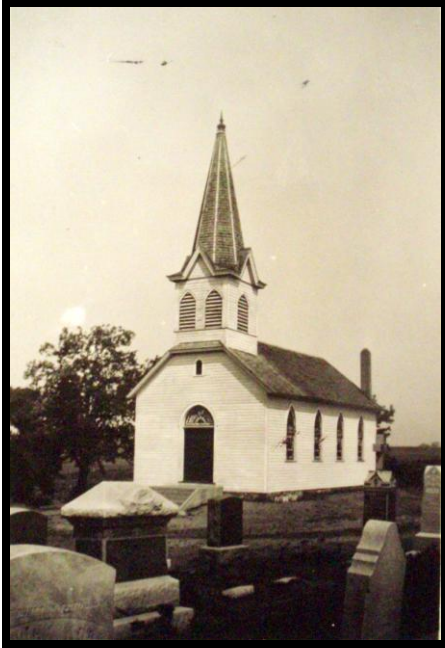


Sign that “Olaf” wore around his neck



“Olaf” our own Paul Ellefson

History of Mount Olivet Lutheran Church



1936 WPA Picture



Today preserved history

The original Mount Olivet Lutheran Church of Medicine Lake is located on Old Rockford Road in Plymouth, MN. It was built in 1880 and now 135 years old. The church was restored in 1990 with a grant from the ONAN Family foundation in memory of Geraldine Onan Smith. It is now called the Mount Olivet Chapel.

The following church history was compiled by John W. Matson:

1850's - The settlers in the Medicine Lake area were served by missionaries who came a few times each year to conduct services. One of the first missionaries who conducted services was Pastor Rakcopp, who would walk from Osseo. The word of his arrival was spread by word of mouth and several families would gather in one home for services.

1854 - Herman Sandhoff homesteaded in 1854 on the north end of Medicine Lake area and his children, Ed and Ida recalled having church services in their log house by the lake. On these special occasions there would always be a big dinner after the services. Later on the service were held in the District 51 School House. There were some objections to this so services were moved to the home of Christopher Sandhoff home which was located just east of the schoolhouse.

1871 - Christopher Sandhoff died on April 2, 1871 and he was the first person buried in the present cemetery. Just before the burial the cemetery was dedicated. Later when the cemetery was surveyed, it was found that the actual grave was on land owned by August Sandhoff, who then donated a narrow strip of land to the cemetery so the grave would not have to be moved.

1878 - On June 12, 1878, a German Evangelical Cemetery Association was formed by the adoption of articles of incorporation.

1880 - Provisions were made to build a church on the property owned by the cemetery association. The church was organized as a local congregation and it took the name of *Emanuel Evangelical Church of the Evangelical and Reformed Church of North America*. The ten charter members were Herman Sandhoff, August C. Sandhoff, August Ed Sandhoff, William Sandhoff, Henry Fitzer, William Schmidt, Henry Schmidt, Henry Proehl and one other person. Services were conducted in German and all records were kept in German until the early 1900's.

1881 - There were eight in the first confirmation class, which was conducted by Rev. Fleeer, Pastor of St. John's Evangelical Church, Minneapolis. Confirmed were Mrs. Elizabeth Roggerman, Dora Fitzer, Bertha Sandhoff, Minnie Sandhoff, Adolph Sandhoff, Mary Sandhoff, Anna Sandhoff and Fred Sandhoff.

1881-1952 - During this period the church was served by several pastors from Saint John's Evangelical Church Minneapolis. In the late 1940's when Rev. Paul Meyers became ill and was unable to conduct services at the church, students from Northwestern Lutheran Seminary, Minneapolis, assumed his responsibilities. After many meetings the congregation voted to reorganize and become a Lutheran church. Dr. Paul Bishop translated the old constitution from German into English.

1952 - On August 1, 1952 the congregation became a sister congregation of Faith Lilac Way Lutheran Church, Robbinsdale, MN. On November 2, 1952 the congregation, with forty-nine charter members, adopted the name Mount Olivet Evangelical Lutheran Church of Medicine Lake.

1953 - The first class of students instructed in the Lutheran faith were confirmed on June 7, 1953. The members of this class were Bruce Broman, Richard Huston, Evelyn Roggermann and Karen Schulz. On December 21, 1953 the cemetery association disbanded and turned the church building and cemetery over to the Mount Olivet congregation.

The Mount Olivet Lutheran Church has continued to grow with a new church built across the road from the restored chapel. The chapel is now a historical landmark used for weddings and other events.

Note: The history of St. Joseph's and Messiah Methodist churches will be highlighted in future news letters.

Plymouth History Bus Tour

On October 5th the Plymouth Historical Society again had a History Bus Tour of Plymouth. The bus tour always fills up quickly and we know that all the people that attended learned a little more about Plymouth's early history. We were fortunate to have Bruce Arne driving the restored Classic Bus as he is a long time Plymouth resident.





Bus tour group in front of Mt Olivet Chapel.

Website

The Plymouth Historical Society website is:

www.plymouthmnhistoricalsociety.com

Check us out!

Note: All past newsletters dating back to 1986 are available on-line in PDF format for viewing or printing.

Donations

Donated by Lisa Brown Inc:

- \$300 donated on behalf of the new Park Nicollet Plymouth Clinic for use of early pictures of Plymouth.

Donated by Maureen Brown, Ada, OK:

- \$25



Meetings

New - The Museum is also open the 1st and 3rd Sunday of the month in the afternoon from 1:00 to 3:00 PM during the Spring, Summer and Fall.

The monthly business meetings are held on the 4th Monday of the month at 7 p.m. in the Plymouth Historical Society Building, located at 3605 Fernbrook Lane North, Plymouth, MN.

Open by special appointment in January, February & March

Current Officers

The following are the present officers:

President	Dennis Jacobson	763-972-0988
Vice President	Kay Bertrand,	763-249-0138
Secretary	Betty Jacobson	763-972-0988
Treasurer	Gary Schiebe	763-473-4889



Mailing and Membership List

If you are not a member and want to sign up or if you have any questions, please call:
Kay Bertrand, 763-249-0138.

The 2015 annual dues are:

Individual	\$10.00
Family	\$15.00
Individual Lifetime	\$100.00
Family Lifetime	\$150.00

If you would like the newsletter delivered via E-mail please notify Kay Bertrand or send an e-mail to: info@plymouthmnhistoricalsociety.com

If you do, it is a plus for both of us. When you receive via e-mail it will be in color. When sent by mail it is in black and white and costs PHS about \$2.00 per copy to print and mail.



PLYMOUTH HISTORICAL SOCIETY

www.plymouthmnhistoricalsociety.com

Dear Member:

This is a reminder that you're **2015 Annual PLYMOUTH HISTORICAL SOCIETY Dues** are payable starting in January 2015 unless you are a Life Time member.

We hope you enjoyed the events and newsletters of our Society during the past year, and we thank you in advance for your continued membership and participation.

Please tear off the lower part of this sheet and send it with your check in the enclosed envelope. If you itemize deductions on your income tax forms, you may qualify for a deduction.

Yours truly,

Kay Bertrand
16025 5th Ave. N.
Plymouth, MN 55447
763-249-0138

✂ -----

Name _____ Tel. No. _____

Address _____

City _____ State _____ Zip Code _____

E-Mail _____

I am interested in helping with:

- | | | | |
|-----------------------------|--------------------------|-----------------------|--------------------------|
| Cataloging | <input type="checkbox"/> | Preservation | <input type="checkbox"/> |
| Collecting Art-facts | <input type="checkbox"/> | Programs for meetings | <input type="checkbox"/> |
| Interviews for oral history | <input type="checkbox"/> | Other | <input type="checkbox"/> |

Annual Dues:

Individual	\$10.00
Family	\$15.00
Individual Lifetime	\$100.00
Family Lifetime	\$150/00