



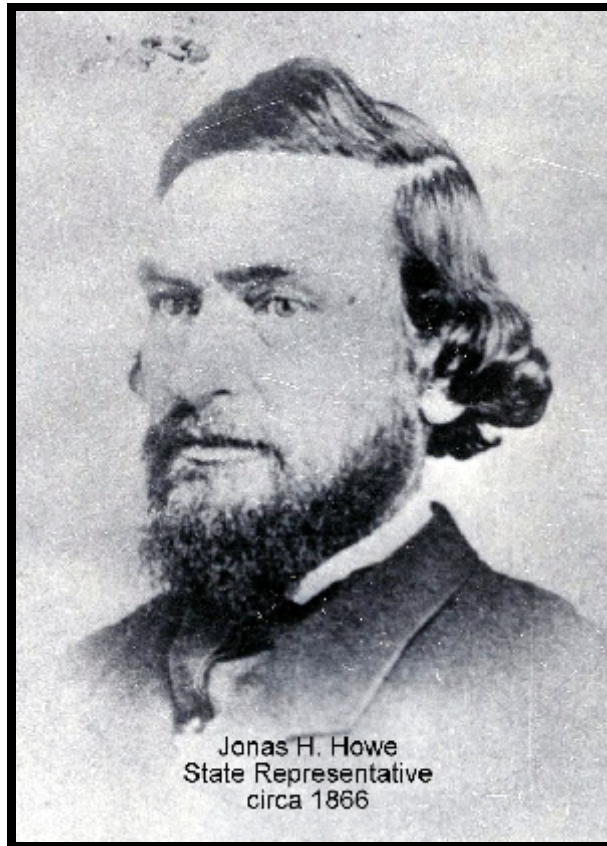
PLYMOUTH HISTORICAL SOCIETY

2010

Summer

Jonas Holland Howe

I bet you didn't know that Plymouth had a Pioneer Artist



Jonas Holland Howe was born April 28, 1821 in Petersham, MA. At age 23 studied art in Boston, met Margaret Swindell and were married in 1846. They lived in Petersham on his father's farm and did continue to paint. In 1855 Jonas, due to health reasons decided to come to Minnesota. He built a log house in Plymouth (near Red Robin) and obtained 160 acres. The following year his wife traveled by herself with five young children to Minnesota.

Jonas served leading role in the formation of Plymouth. He was the first Town Clerk in 1858 and served in many capacities over the years. Such as Officer of the Home Guard, Justice of the Peace and the School Board. He also served during the Civil War as an Enlistment Officer for Union Army, 1st Sergeant of Company F MN Volunteer Infantry 1864-65 and later was elected to the Minnesota State House of Representatives in 1866.

He was active in politics, helping establish the Grange, a writer on agricultural, economic and political subjects. In his later years he again took up painting at the encouragement of his family. The paintings “Minnehaha Falls” and “Artist Paradise” were painted in the 1880’s. Jonas H. Holland died on October 1, 1898 and was buried in Parkers Lake Cemetery.

The Plymouth Historical Society had obtained the paintings on loan from the Hennepin History Museum in Minneapolis. Three of Jonas H. Howe’s paintings were shown at the Primavera Art Fair and were on display at City Hall until June. Another of his known paintings is on display at the Petersham, MA Historical Society.

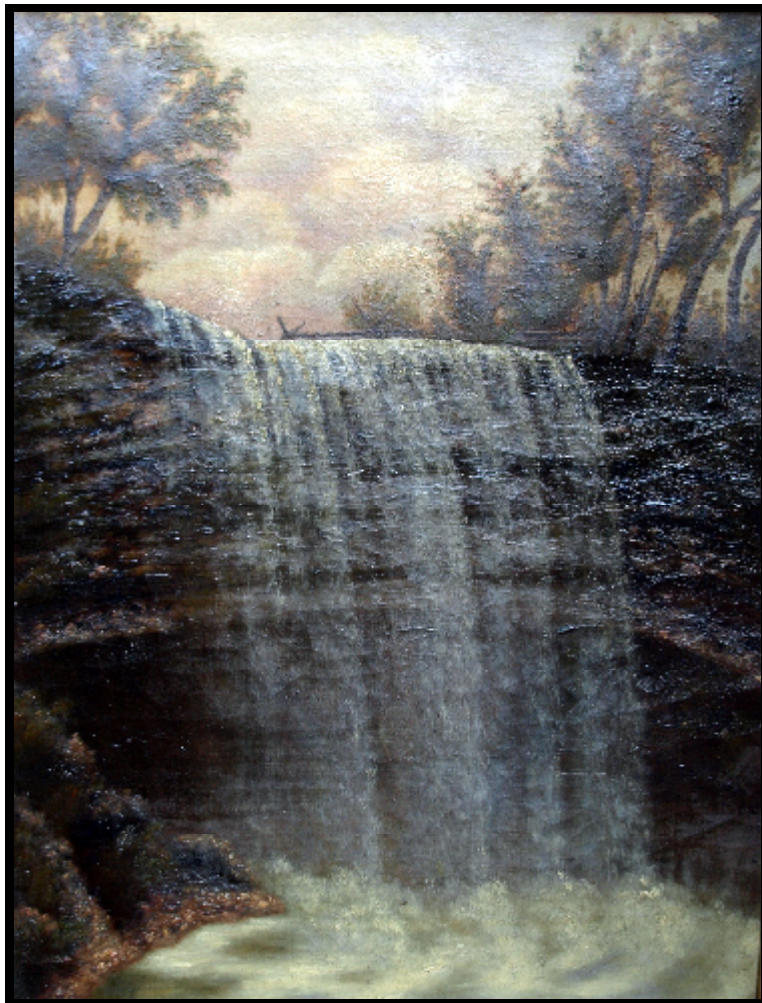


Indian Maiden Crossing Stream circa 1840's

(Note this painting was brought from Petersham, MA in the fall of 1855. Later it was hung between the two front windows of the Howe Farm house in Plymouth built circa 1870's.)



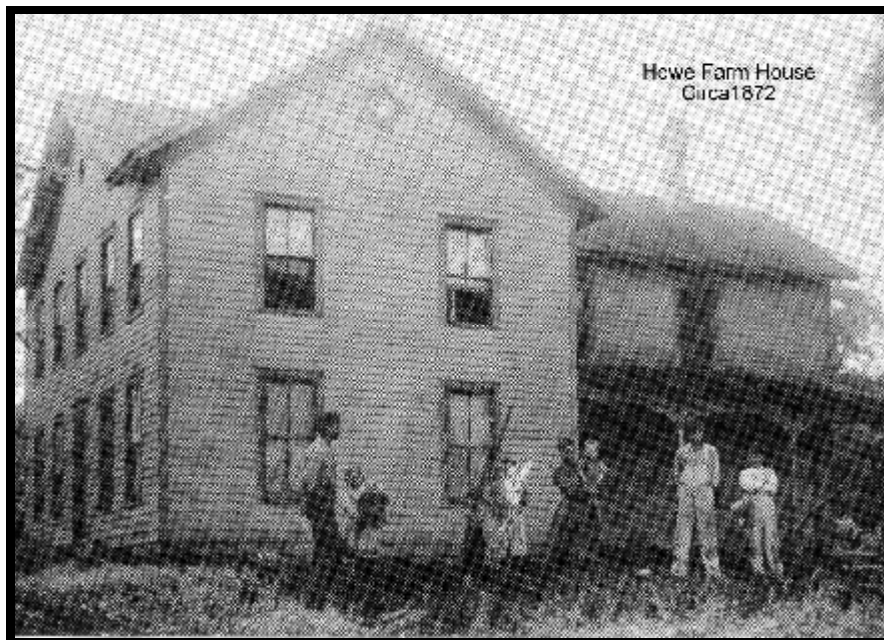
Painters Paradise circa 1880's



Minnehaha Falls circa 1880's

The following is a timeline of Jonas & Margaret Howe's life in Petersham, MA, then traveling and then settling in Plymouth, MN

- **Jonas Holland Howe was born April 28, 1821 in Petersham, MA**
- **Schooling in Hardwick, academies in Deerfield and New Salem**
- **Studied art in Boston at age 23**
- **Married Margaret Adele Swindell of Boston on June 10, 1846**
- **Painting "Indian Maiden" circa 1840's painted in MA.**
- **Children born in Petersham – Cora, Gertie, Laura, Nannie and Angeline.**
- **Due to health, abandoned art for farming in Minnesota Territory**
- **Traveled alone to Minnesota 1854 to settle on land to farm**
- **Margaret and five daughters traveled alone to Minnesota 1855**
- **Log home burned and farm house built (located near Red Robin Restaurant)**



- **Served leading role in formation of Plymouth**
 - **Plymouth's first Town Clerk - May 11, 1858**
 - **Plymouth Home Guard, second in command of militia unit during the Sioux Uprising of 1862**
 - **Served as justice of the peace and as an officer of the local School District #95 (later we knew it as Beacon Heights)**

- Enlistment officer in the Union army
- 1st sergeant in Company F, Eleventh Minnesota Volunteer Infantry 1864-1865 – served in Tennessee
- Children born in Plymouth – Carrie, Ben, Minnie, George and Jonas
- Children Angeline, George and Jonas died with in three weeks between Dec. 1866 and Jan. 1867 of Typhoid. Buried on the farm and in 1905 disinterred and buried in Parkers Lake Cemetery
- Petitioned Legislature to found the State School for the Deaf - Faribault, oldest daughter Cora was in the first graduation class
- Six of his daughters became teachers and several taught in Plymouth
- Elected a Minnesota State House Representative 5th District, 1866
- Worked with Oliver Kelley in establishing the National Grange and lectured for that organization in many communities of central Minnesota.
- Writer on agricultural, economic, and political subjects, frequent contributor to *Farm, Stock and Home*, an agricultural paper popular in the 1870's.
- Politically active in the Farmers Alliance and People's Party
- Paintings “Minnehaha Falls” and “Artist Paradise” circa 1880's , painted in his later years at the encouragement of his family
- Jonas Holland Howe died on October 1, 1898 at the age of 78 and Margaret on December 2, 1906, both are buried in Parkers Lake Cemetery

Plymouth is proud to have such a wonderful pioneer family whose dedication and integrity played such an important part in laying the foundation for the growth of our community.

History on Parade

On Sunday October 10th the Plymouth Historical Society will conduct the 3rd Annual History on Parade tour. A Classic TCRT 1954 bus will be chartered from the Minnesota Transportation Museum and 50 people will tour Plymouth for two ½ hours. The tour will be narrated and a booklet describing the locations of many past and present buildings will be provided to each participant. The tour will make stops at selected locations. The cost will be \$9.00 per person and look for future announcements about the event.

Turn of the Century Affair

The Plymouth Historical Society presented a style show at the Turn of the Century Affair in June. Kay Bertrand did a wonderful job in rounding up the clothing and people young and old to model. The event honors Plymouth residents that are over 90 years young with a luncheon and entertainment. After the event attendees could get a ride in an antique automobile such as Model T and A Fords, Maxwell, Pontiac or a Chevy.

Receiving the donations of period clothing is very much appreciated by PHS and strengthens our ability to display or utilize these types of clothing for future events.

The following is a picture of PHS's models looking for "stardom" or maybe a "cameo" role in the next movie.



Donations

The Plymouth Historical Society wants to thank the following people for their donations:

- Butter Crock, Cracker Jar, China Plate, Dresser Scarf, Framed Needle Point, Antique Wash Bowel, Glass Center Piece and Santa Statue.
Donated by: Charlene Murdock
- Numerous 1920-1930's dresses, and jackets

Donated by: Sue Kueppers

- Long "Martha Washington" style dress and other articles of clothing
Donated by: Lynn Necedander
- Doll, 1895 Raffle Ticket, Misl. Pictures of Eckes family and home
Donated by: Katy Adams Eckes
- Spice can, pictures of Robert Ernst Grocery store and home, Herb's Corner pictures and Badges
Donated by: Rosanna Hughes

Current Officers

- **Old papers and deeds**
Donated by: Floyd Zugisderg
- **Signed Music in Plymouth Poster, Vintage clothing, gloves, hats and 14 Lap Trays**
Donated by: Ruth Bjerke

The following are the present officers:

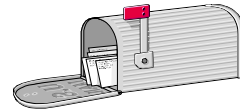
| | | |
|----------------|-----------------|--------------|
| President | Ben Broman | 763-559-5721 |
| Vice President | Dennis Jacobson | 763-972-0988 |
| Secretary | Betty Jacobson | 763-972-0988 |
| Treasurer | Gary Schiebe | 763-473-4889 |



Meetings

The monthly meetings are held on the 4th Monday of the month at 7 p.m. in the Plymouth Historical Society Building, located at 3605 Fernbrook Lane North, Plymouth, MN. The Museum is also open the third Sunday of the Month in the afternoon from 1:00 to 3:00 PM during the Spring Summer and fall.

Mailing and Membership List



If you are not a member and want to sign up or if you have any questions, please call:
Kay Bertrand, 763-249-0138.

The 2010 annual dues are:

| | |
|---------------------|----------|
| Individual | \$10.00 |
| Family | \$15.00 |
| Individual Lifetime | \$100.00 |
| Family Lifetime | \$150.00 |

If you would like the newsletter delivered via e-mail please notify Kay Bertrand.