



PLYMOUTH HISTORICAL SOCIETY

August 2009

“History on Parade Tour of Plymouth”

On Sunday October 11th from 1:00 to 3:30 PM the Plymouth Historical Society will be having the 2nd Annual “History on Parade” tour of Plymouth in a Classic Twin Cities Transit bus. The tour will leave the Old Town Hall (Plymouth Historical Museum) in Plymouth Creek Park and visit selected historical sites and return back to the Old Town Hall. The tour will be narrated and a pamphlet with historical pictures and notes about the locations of farms, homes, schools and churches that have been the foundation of the growth of Plymouth will be provided.

So you and your family come and join us to relive the past – hurry make your reservations to get your tickets since space is limited to 50 people on the tour.

Hurry don’t miss out on this special event. For reservations please contact Gary Schiebe 763-473-4889 or via e-mail garyschiebe@isp.com.

Date: Sunday October 11th

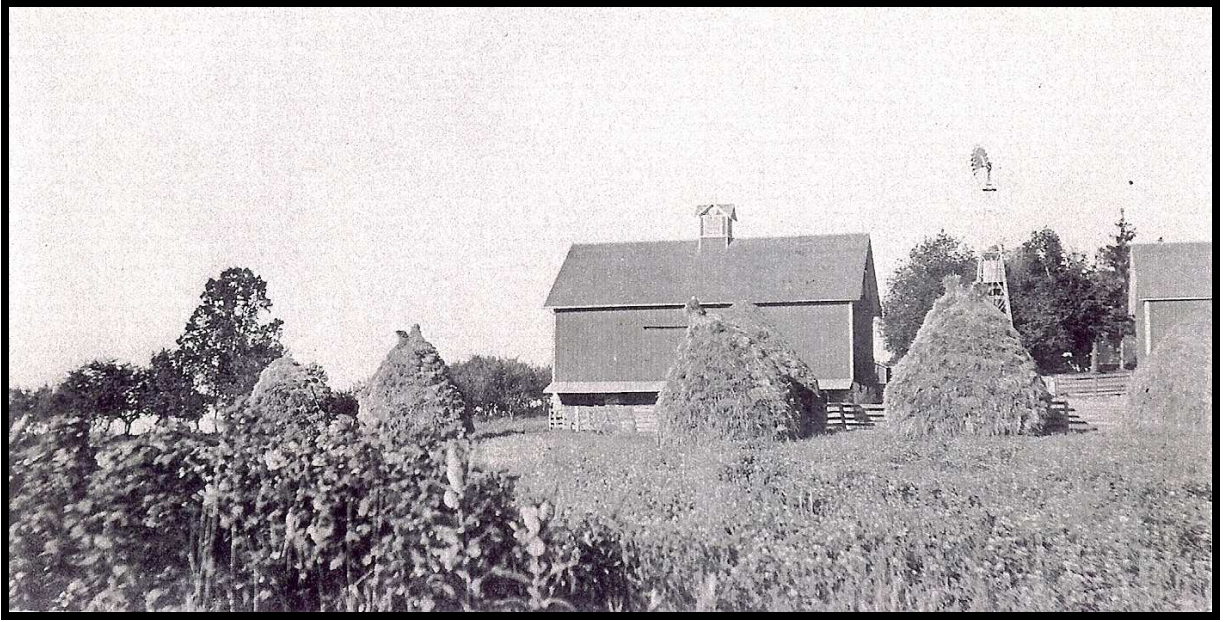
Time: 1:00 PM – 3:30 PM

Cost: \$8.00 per person, payment required in advance to assure you or your family a place on the bus.

(Note you must arrive at Plymouth Creek Park by 12:45 PM and be ready to board the bus since it will leave promptly at 1:00 PM. We will make at least one rest room stop during the tour and the Plymouth Historical Museum will be open after the tour for those that would like to spend time in the Old Town Hall.)

Trittelwitz Farm

Plymouth's history is all around you if you look and are inquisitive. We all take it for granted that everything old in Plymouth was torn down and replaced. We have many wonderful old farm homes that have been preserved and maintained. One such farm home is the Trittelwitz's and we have to thank Roger Trittelwitz for providing early pictures of the family farm. The farm was located south of Cty Rd 24 between Dunkirk and Hwy 101. Now the original farm land is occupied by new homes except for a "gem" located on a high point of the original farmstead.



Barn and Grain Stacks circa 1920's



Louis Trittelwitz with Single Bottom Plow - Three Horse Team circa 1915



Charles Trittelwitz by Farm House with Colt & Mare circa 1920's



Today – Owned by the Pierson's - beautifully restored and maintained

In the Minnesota Farm Account Book of the Charles and Edna Trittelwitz farm documented by Virginia Trittelwitz (his daughter) opens a window on the life on a Plymouth farm in 1938. Here is a sampling of the entries in the ledger which was done as part of her college classes at U of M Ag School:

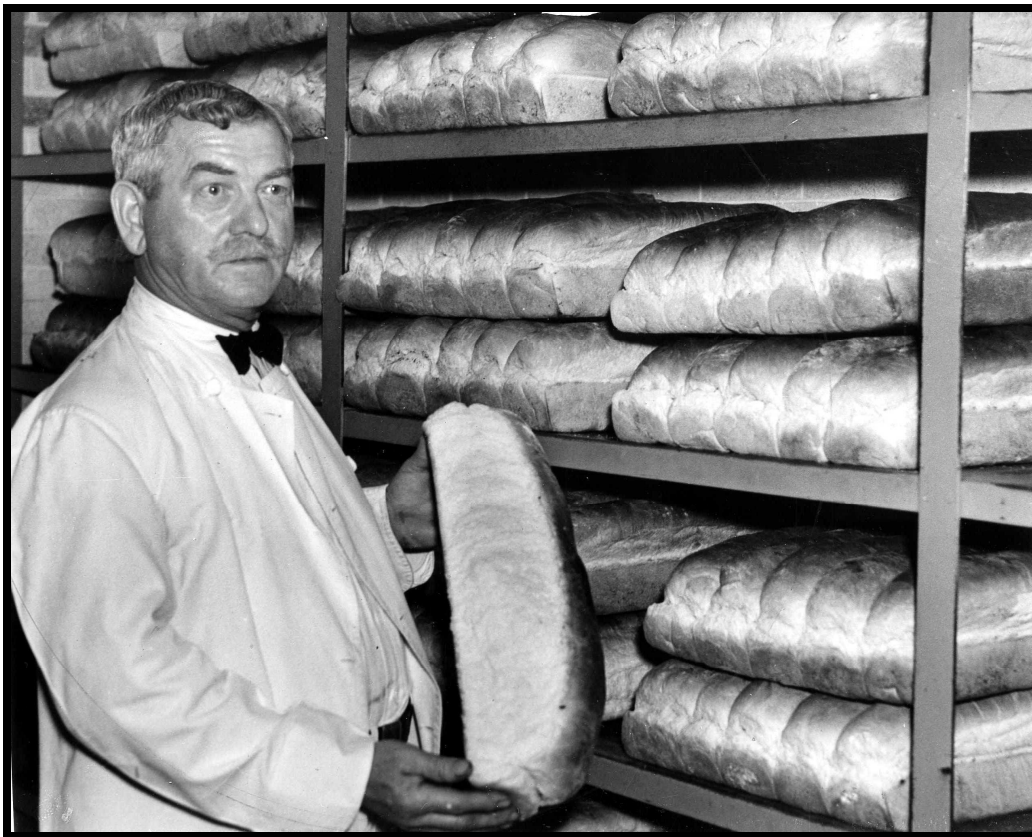
- Gasoline cost .17cents a gallon
- Sold eggs for .23 cents per dozen
- Sold cow & calf for .05 cents per pound
- Sold milk for \$1.46 to \$1.74 per hundred weight
- Sold 20 lbs of potatoes for .36 cents
- Sold hay at \$6 to \$8 dollars per ton
- 120 acres and farm valued at \$12,000
- Property taxes on the farm for the year were \$195
- Small barn built 1887 and large barn built 1892
- House built 1904

The Work House

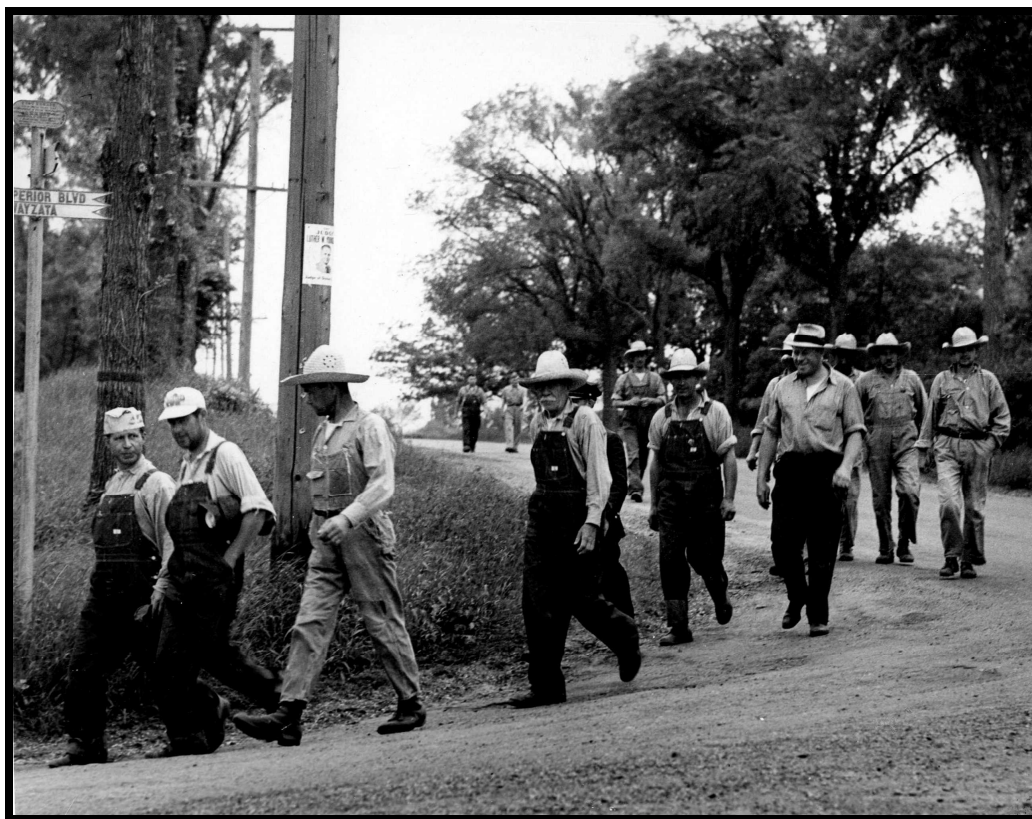
After some digging at the Special Collections archives in the Minneapolis Public Library and the Hennepin County Museum new information and pictures have surfaced about the early history of The Minneapolis Work House. It moved to Plymouth in the late 20's and early 30's from the Camden area and we now call it the Hennepin County Corrections Facility.



Under Construction 1931



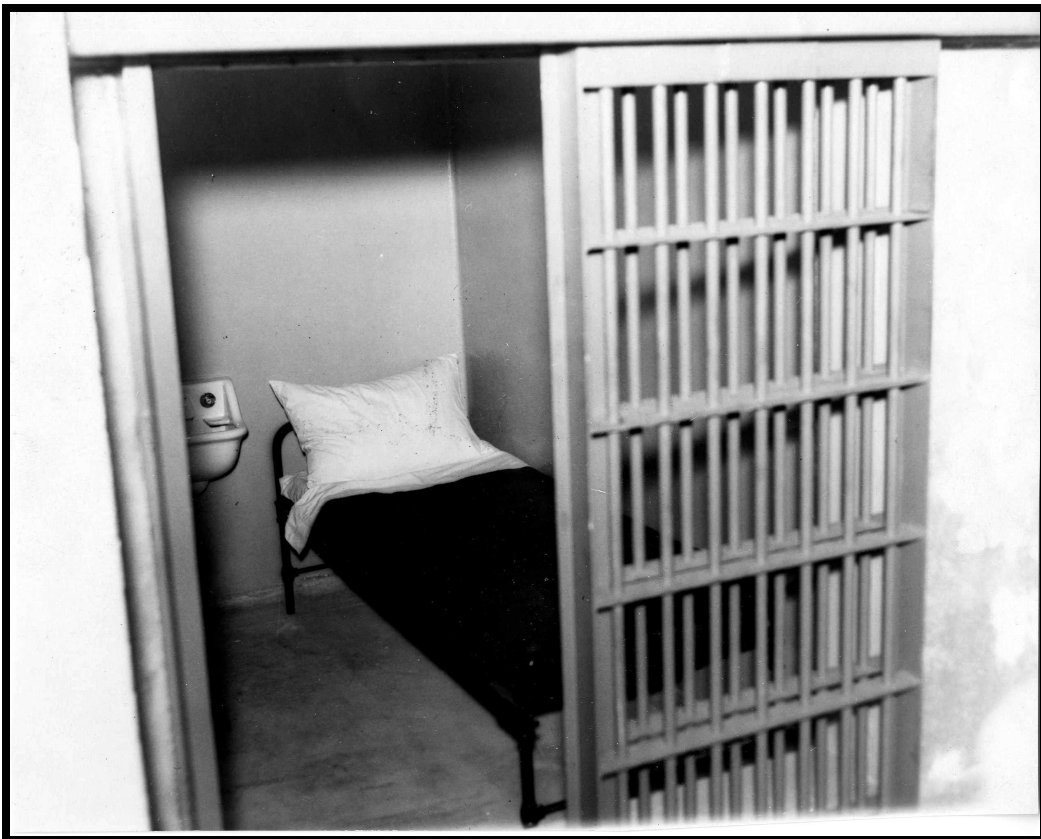
Chef Jacob Koch baked 320 loaves each day



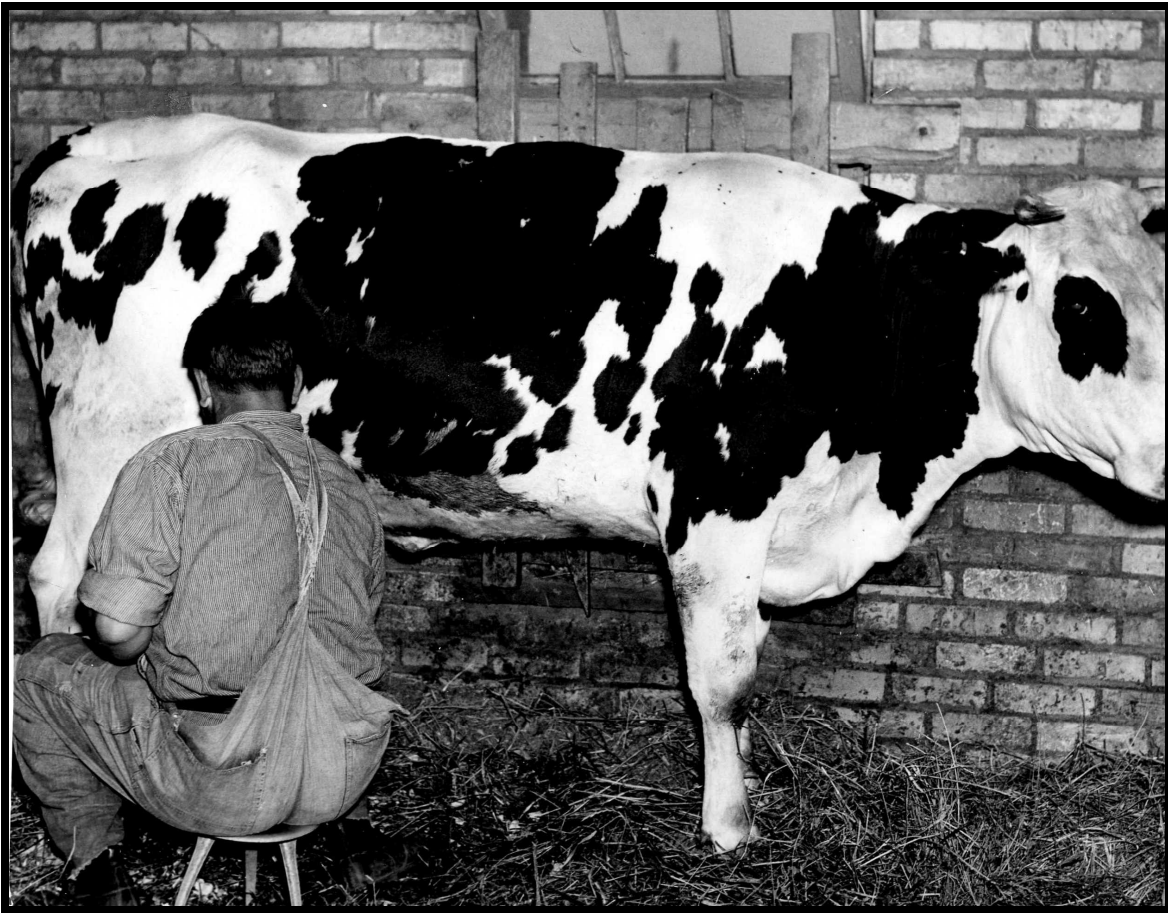
**Inmates returning to Work House from work details – June 1936
(Turning off of Cty Rd 6 unto Shenandoah heading south)**



Easy work for the older inmates – July 1936



Typical Cell



Milking cow – July 1936

The move of the Minneapolis Work House to Plymouth was not without its controversy. Initially the Welfare Board who oversaw the operation of the Work House, Hospital (TB Sanitarium) and Crematorium (garbage burner that generated power and lit street lights) in Camden needed more land for expanded operation. There were three choices; the Earle Brown Farm, J.B. Gilfillan's Ben Avon Farm by Parkers Lake and another property in Coon Rapids. Earle Brown owned two of the properties and offered his property in Brooklyn Center for \$350 per acre or the farm he owned in Plymouth for \$250 per acre. The Welfare Board selected the Plymouth farm and paid Earle Brown \$121,500 for the 486 acres in 1923.

The families around Parkers Lake were upset that the Work House was going to be built next to them along with a garbage burner. Things settled down when the Welfare Board decided not to build the garbage burner in Plymouth and moved the TB Sanitarium patients to Glen Lake.

You may ask how Earle Brown was connected to Plymouth. Earle Brown's Grandfather John Martin married J. B. Gilfillan's older sister Jane. J. B. Gilfillan died in 1924 and Earle Brown had purchased the farm previously, probably as an investment since he had the larger Earle Brown Farm he inherited in 1905 from his grandfather when he was about 26 years old. The families share a large monument and burial plot in Lakewood Cemetery with Gilfillan on one side and Martin on the other side. The markers and headstones provide very valuable information about the families and their relationships.



Gilfillan



Martin

Donations

The Plymouth Historical Society wants to thank the following people for their donations:

- Memorials in recognition of Loren Schiebe's support of the Plymouth Historical Society. Loren passed away on June 7, 2009. The donations will be utilized to continue the preservation of Plymouth's history – Donated by Kay Tart and Nadyne Balke
- Several pictures and a detailed 1938 farm journal of the Trittelwitz farm in Plymouth - Donated by Roger Trittelwitz
- Scale model replica of the original District #95 school which was later called Beacon Heights – Built and donated by Gene Heezen

- Brass Bed – donated by Clarence & Altrene Jansson
- School Desk – Donated by Harriett LaBode
- 1903-04 Plymouth Tax Records – Brought in by Susan Sorrentino

Current Officers

The following are the present officers:

President	Ben Broman	763-559-5721
Vice President	Dennis Jacobson	763-972-0988
Secretary	Betty Jacobson	763-972-0988
Treasurer	Gary Schiebe	763-473-4889



Meetings

The monthly meetings are held on the 4th Monday of the month at 7 p.m. in the Plymouth Historical Society Building, located at 3605 Fernbrook Lane North, Plymouth, MN. The Museum is also open the third Sunday of the Month in the afternoon from 1:00 to 3:00 PM during the Spring, Summer and Fall.

Mailing and Membership List



If you are not a member and want to sign up or if you have any questions, please call:
Kay Bertrand, 763-249-0138.

The 2008 annual dues are:

Individual	\$10.00
Family	\$15.00
Individual Lifetime	\$100.00
Family Lifetime	\$150.00